

GigaView™ LabVIEW™ Driver Installation Instructions



These drivers function with LabVIEW 6.1 or later.

You must use the appropriate Driver version with the version of GigaView that you have. See the table below for more information.

If you have any questions about installation, contact Wavecrest Technical support at (952)646-0111 or by email at techsupport@wavecrest.com

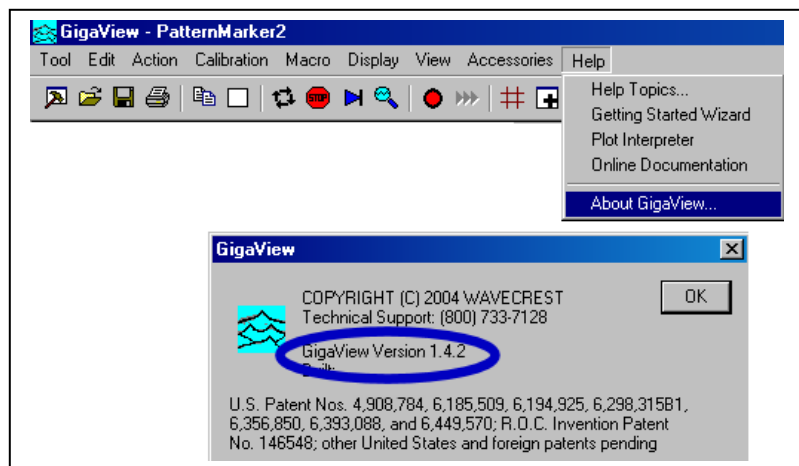
To contact a representative about upgrading your SIA to a new GigaView version please contact us at US_Sales@wavecrestcorp.com or 1(800)733-7128.

If you have GigaView Version 1.3.1 then download LabVIEW driver 1.3.0

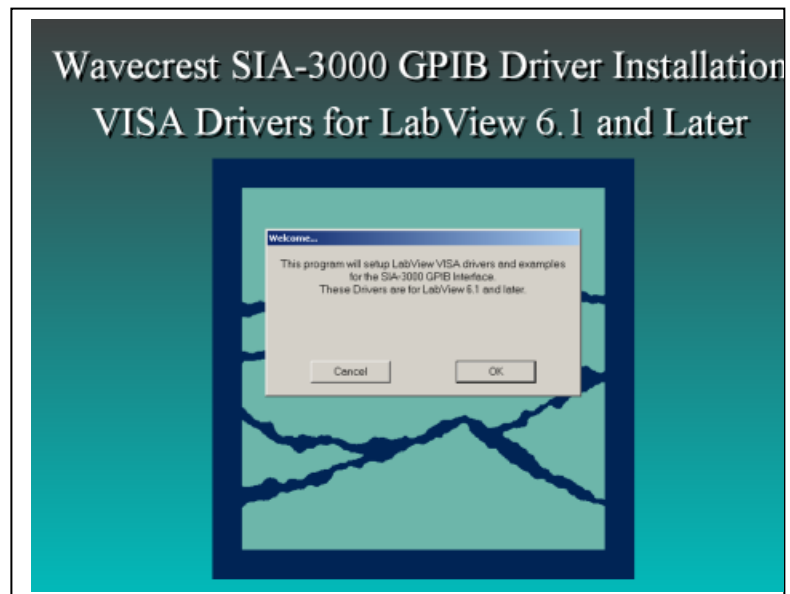
If you have GigaView Version 1.4.2 then download LabVIEW driver 1.4.1

Determine the driver that you need:

Go to Help|About GigaView and find the version that is installed.



The setup file will prompt you with installation directions. The drivers, examples, and manuals will be installed in the LabVIEW directory on your PC.



If you have questions regarding this installation, contact Wavecrest Technical Support at 1(800)733-7128 ext.111 or email techsupport@wavecrest.com